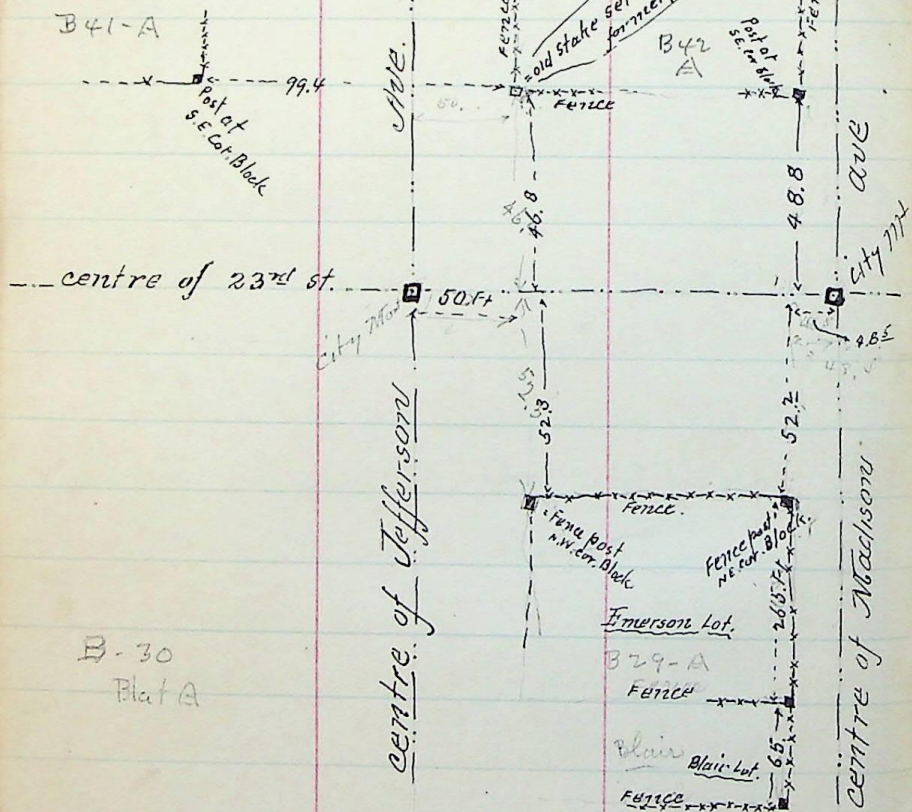


August 19-1896.

Survey made at request of  
T.D. Johnson Lawyer.



This fence post was declared to be the true N.E. Cor. of Block, by Judge of 2nd Dist Court. in a case of Mrs. Ann...

17-387- Alongo Knight to Christopher O. Folkman - May 1-1879.

Pt. N.W. 1/4 Sec. 3. T. 6-N-R. 2.W. Beg. 72 rods S + 6 rods W. of N.E. Cor. sd 1/4 Sec. 56 3/4° W. 56.8 rods. - N 86 3/4° W. 39 3 rods, - N 19 1/2° W 14 1/2 rods, N 7 3/4° E 40.5 rods, - S 89 1/4° E 45 rods to beg. - 15 a. 1 r. 35 p. more or less.

See plat Book page 59 see survey on page 27.

L-173 H.C. Hanson to Wm Skeer - Pt. N.W. 1/4 Sec 3. T. 6, N-R. 2.W. - Beg. 10 r. N. of S.W. Cor. sd 1/4 - N 48 rods, E. 7.2 rods, - S 10. r. E. 9.78 rods, S 19 1/2° E 36. r. S 38 3/4° E 5 r. W 120 1/2 to beg. 26 a. 3 r. 15 p.

K-611. H.C. Hanson to Heber. R. M<sup>rs</sup> Bride Pt. N.W. 1/4 Sec. 3. T. 6. N-R. 2.W - Beg. 5 8 1/2 E 4 12. r. S. of N.W. Cor. sd 1/4 E. 20. r. S 100. r. N. 20. r. N 100. r. to beg. 12 1/2 a.

T-530. Hans C. Hanson to Alongo Knight Pt. N.W. 1/4 Sec 3. T. 6 N-R. 2.W. - Beg. 72 r. S. + 6. r. W. of N.E. Cor. sd 1/4 - S 6 3/4° W. 56.8 r. N 86 3/4° W. 39° r. N 19 1/2° W. 14 1/2 r. W 14 rods N 40.4 r. S 89 1/4° E 75.4 r. to beg. 22 34/100 a